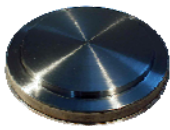


致：电热水壶的出口商

关于：360度电热水壶出口

奥特控制有限公司在1997年就一种电加热容器密封系统在英国申请了专利，之后根据1997年优先权文件于1998年10月7日进行了专利国际申请。中国当前的发明专利名称为：“带有将一元件保持在其中的挡圈的电加热容器”和“电加热容器的改进”。

该专利家族包括以下全部或部分技术特征，具体以权利要求书为准：



设置于容器主体底部的加热元件



容器内壁间隔开的支承件



围绕加热元件设置的弹性密封件



密封件具有一个或多个弹性环形肋片



与容器壁相啮合的开口或不开口的挡圈



挡圈也可以位于容器主体的外侧

该专利家族受到如下专利的保护：

EP1021117B1 ZL200310119952.7
EP1314385B1 ZL200510006000.3
ZL98811836.X

奥特控制有限公司已经把上述中国专利转让给翱泰温控器（深圳）有限公司，翱泰温控器（深圳）有限公司在中国海关就上述中国专利进行了知识产权海关保护备案，海关备案号为：P2011-20744、P2011-20745、P2011-20746，敬请使用上述技术还没有取得专利许可的出口商留意。

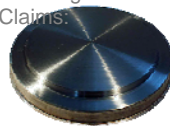
如需进一步信息，请联络
patents@ottercontrols.com.cn

TO: Kettle Exporter

Re: 360° Kettle Export

In 1997 Otter Controls Limited applied for a GB patent for a sealing system for electrically heated vessels and on the 7th October 1998 filed international application based on the 1997 priority document. The names of the granted China invention patents are 'Electrically heated vessels with a circlip in which a member is holder' and 'Improvements relating to electrically heated Vessels'.

The patent family includes some or all of the following technical features, and details subject to Claims:



underfloor heating element



abutments spaced about internal wall



resilient seal around the heating element



seal having one or more resilient circumferential fins



split or non-split circlip to engage with vessel wall



circlip can also locate outside of the vessel body

The patent family is protected by the following granted patents:

EP1021117B1 ZL200310119952.7
EP1314385B1 ZL200510006000.3
ZL98811836.X

Otter Controls Limited has assigned the above China patents to Otter Controls (Shenzhen) Limited and please be noted that Otter Controls (Shenzhen) Limited has recorded the above China Patents with China Customs for IPR Protection. The Customs record numbers are: P2011-20744, P2011-20745, P2011-20746.

For further information please contact
patents@ottercontrols.com.cn